



MARIPOSA  
AT SAN JOAQUIN HILLS

### MARIPOSA at San Joaquin Hills

Residence 5 • Temporarily Sold Out

Sales Office

27525 Homestead Road

Laguna Niguel, CA 92677

Open daily from 10 a.m. to 5 p.m.

(949) 360-4375

**Floor 1 Options:**

No Options Selected

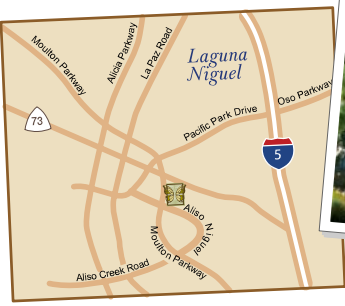
**Floor 2 Options:**

No Options Selected

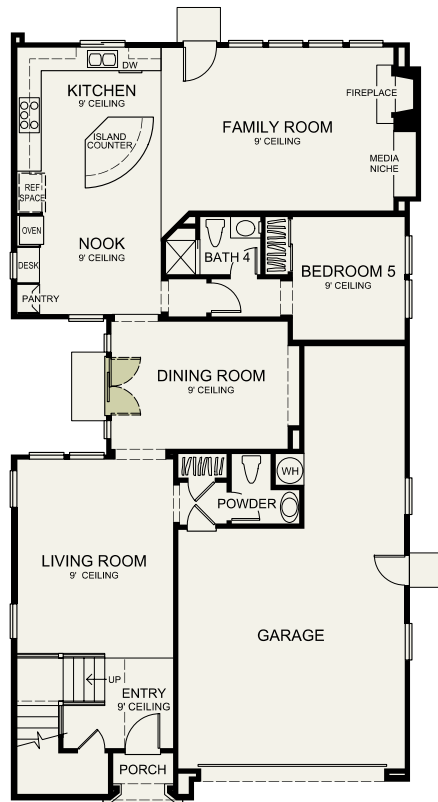
at the San Joaquin Transportation Corridor (73):Exit at Moulton Parkway and drive south a half mileLeft on Aliso Niguel and left to the entranceFrom the San Diego (5) Freeway:Exit at either the Alicia or La Paz



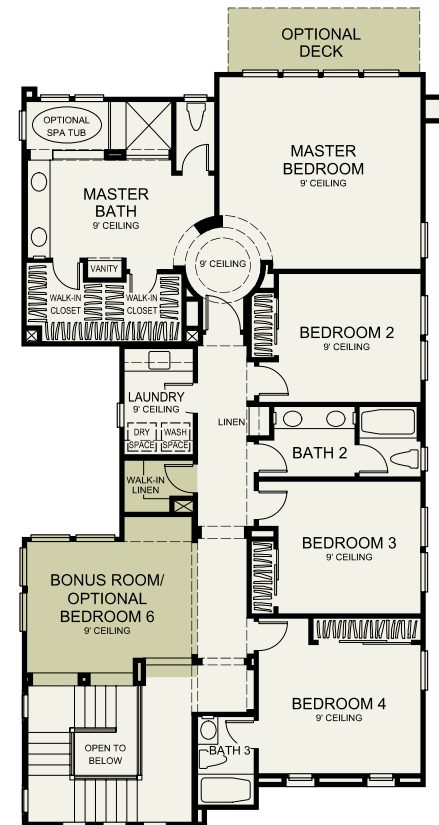
AR



*first floor*



*second floor*



In the interest of continuous improvement, Shapell reserves the right to make modifications in plans, exterior designs, prices, materials, and specifications at any time without notice. Windows and exterior architectural detailing may vary by elevation. Maps, photographs, renderings, and landscaping are illustrative and conceptual. Square footages are approximate. Equal Housing Opportunity 🏠

Copyright 2010 Shapell Homes. All rights reserved.

smartPLAN™ patent pending floorplan technology powered by Graphic Language: [www.graphiclanguage.net](http://www.graphiclanguage.net) | [www.smartBuilderSuite.com](http://www.smartBuilderSuite.com)

